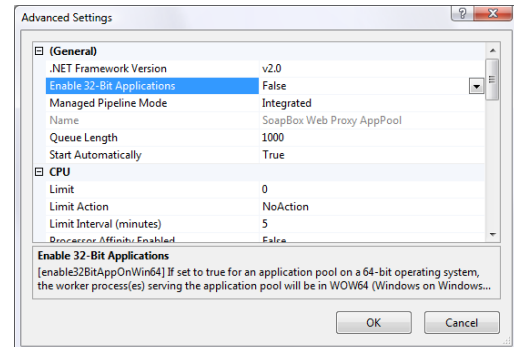
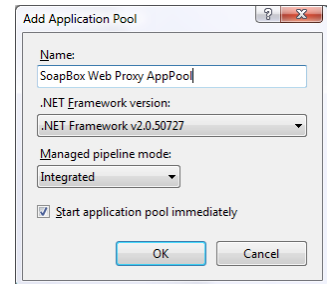


INSTALLING SOAPBOX SERVER WEB PROXY

IIS 7 (32 AND 64 BIT)

SETTING UP THE APPLICATION POOL

1. Open the IIS Management Console
2. Right Click Application Pools and Select Add Application Pool
 - a. Set the name to SoapBox Web Proxy AppPool
 - b. Set the .NET Framework version to .NET Framework v2.0.x
 - c. Set the Managed pipeline mode to Integrated
 - d. Check the Start application pool immediately checkbox
3. Click the OK button to create the Application Pool
4. The new application pool should show up in the list of application pools
5. Right click on the newly created application pool and select Advanced Settings
6. For 64 bit Operating Systems ensure that Enable 32-Bit Applications is set to False
7. For 32 bit Operating Systems ensure that Enable 32-Bit Application is set to True



CONFIGURING THE SERVER WEB PROXY

1. Open the IIS Management Console
2. Navigate to the SoapBox Server Web Proxy
3. Right click on the web application and select Manage Application > Advanced Settings
4. Set the Application Pool to SoapBox Web Proxy AppPool
5. Click OK

